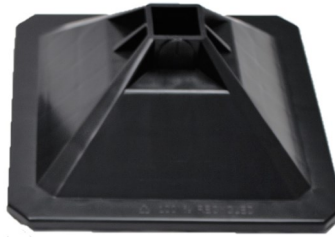




“H” BASE SUPPORTS



Hobby Homes Code	Dimensions (LxWxH)	Max. Static Load
RTHB305	305 x 305 x 120mm	350kg when used as a pair

Our plastic RTHB305 feet are made from 100% recycled High Density Polyethylene (HDPE) and come complete with an anti-vibration pad on the lower surface. These pads are designed to help prevent polymer migration between the roof and the plastic.

The central square recess is tapered to firmly accept 41x41mm HDG channel profiles.

Material Test Report:

Material	High Impact HDPE
Colour	Black
Test Company	Engineering Plastics R&D Centre
Test Date	03.05.2015
Test Conditions	Room temperature 23 deg for 24 hours. Humidity 50+/-5%
Injection temp	230-250 deg C
Melt Index	10.2g/10min

Test item	Units	Standard	Value
Tensile strength	MPa	GB/T1040	16.9
Elongation at break	%	GB/T1040	13.7
Bending strength	MPa	GB9341	18.8
Notched Izod impact strength	KJ/m2	GB/T1843	7.7